

# Key findings - land cover changes

Konstantin Olschofsky  
BIOPRESS final workshop, Brussels  
Wednesday 14th of December 2005



ALTERRA  
WAGENINGEN UR



Centre for  
Ecology & Hydrology  
NATURAL ENVIRONMENT RESEARCH COUNCIL



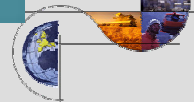
Universität Hamburg



Centre de  
Recerca  
Ecològica i  
Aplicacions  
Forestals  
CREAF



gim



METLA

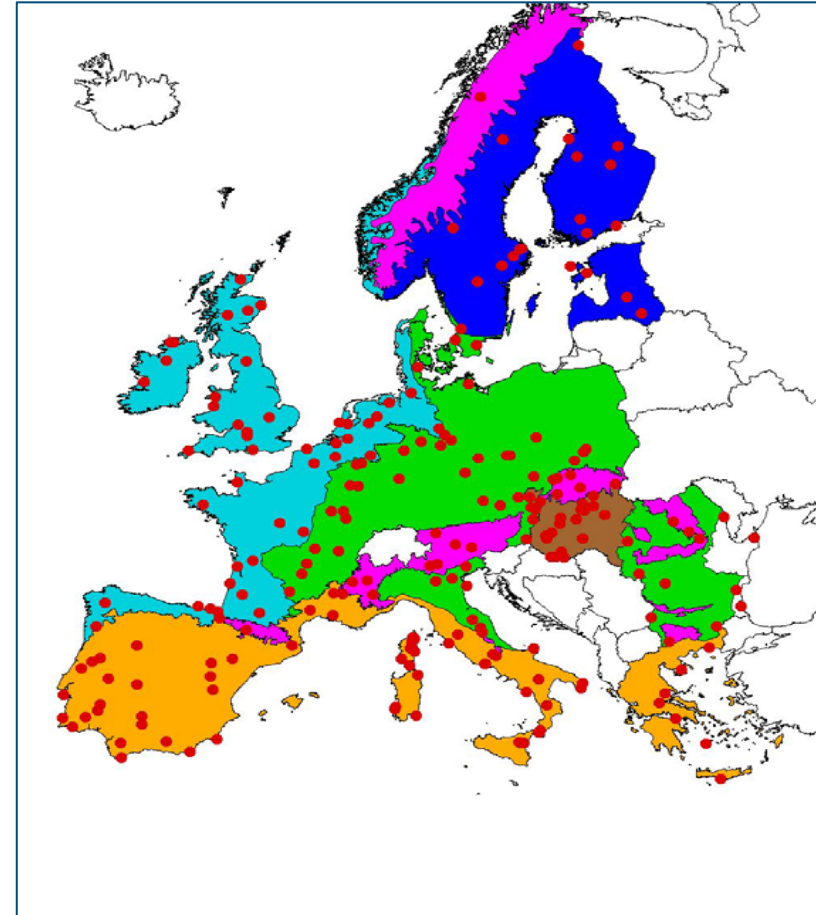
gisat



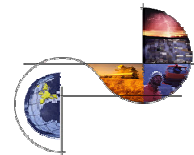
# Sample selection

---

- Focus on Natura 2000 sites with Annex 1 habitats
- Expert pre-selection of 227 samples
- Stratification to BRME
- Deduction of umbrella habitats (Forest, Grasslands, Mire, running water)
- Sub selection due to data availability and resources

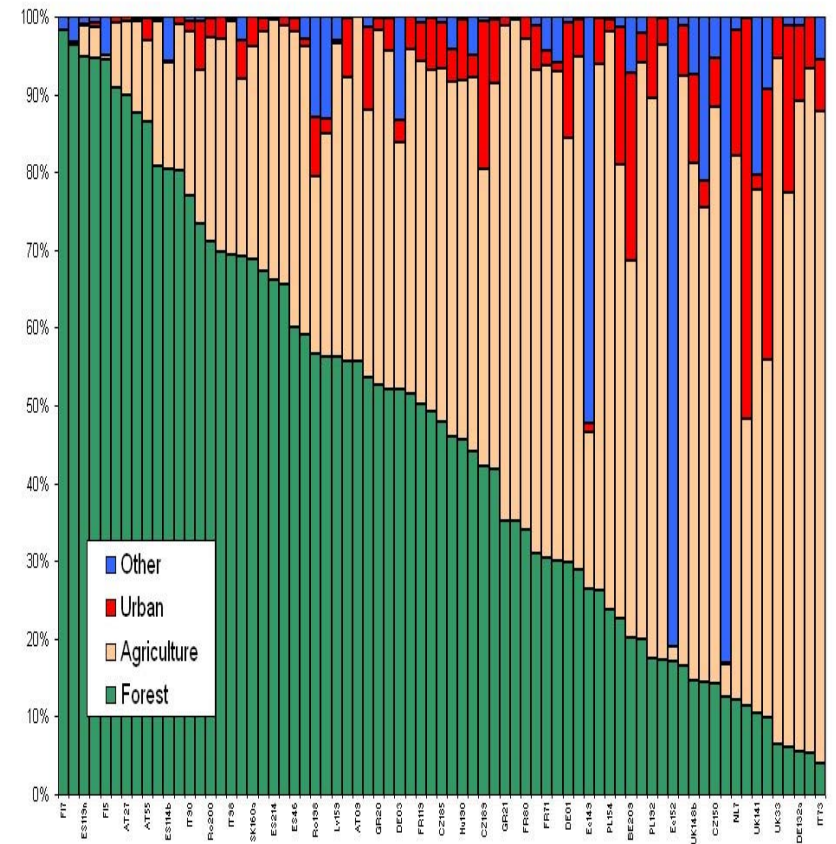
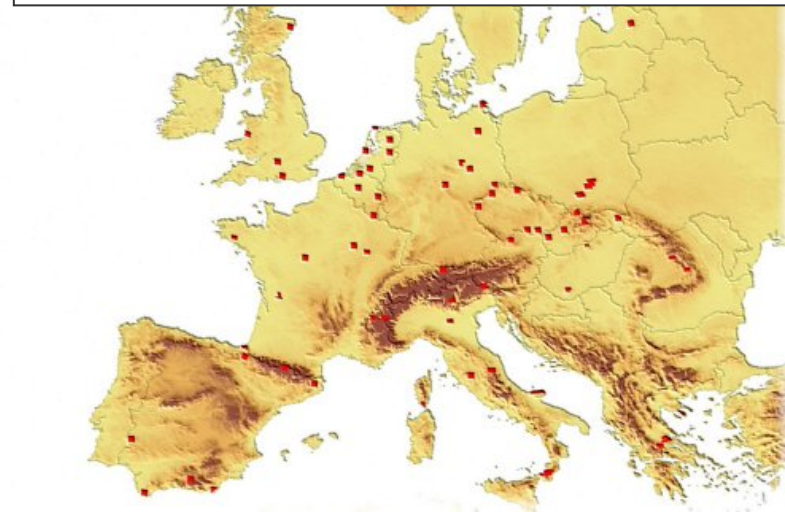


Universität Hamburg



# Distribution of 73 Windows

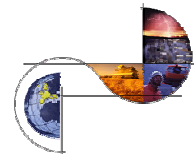
- data availability
- same location as transects
- forest and natural grasslands and agricultural area dominate



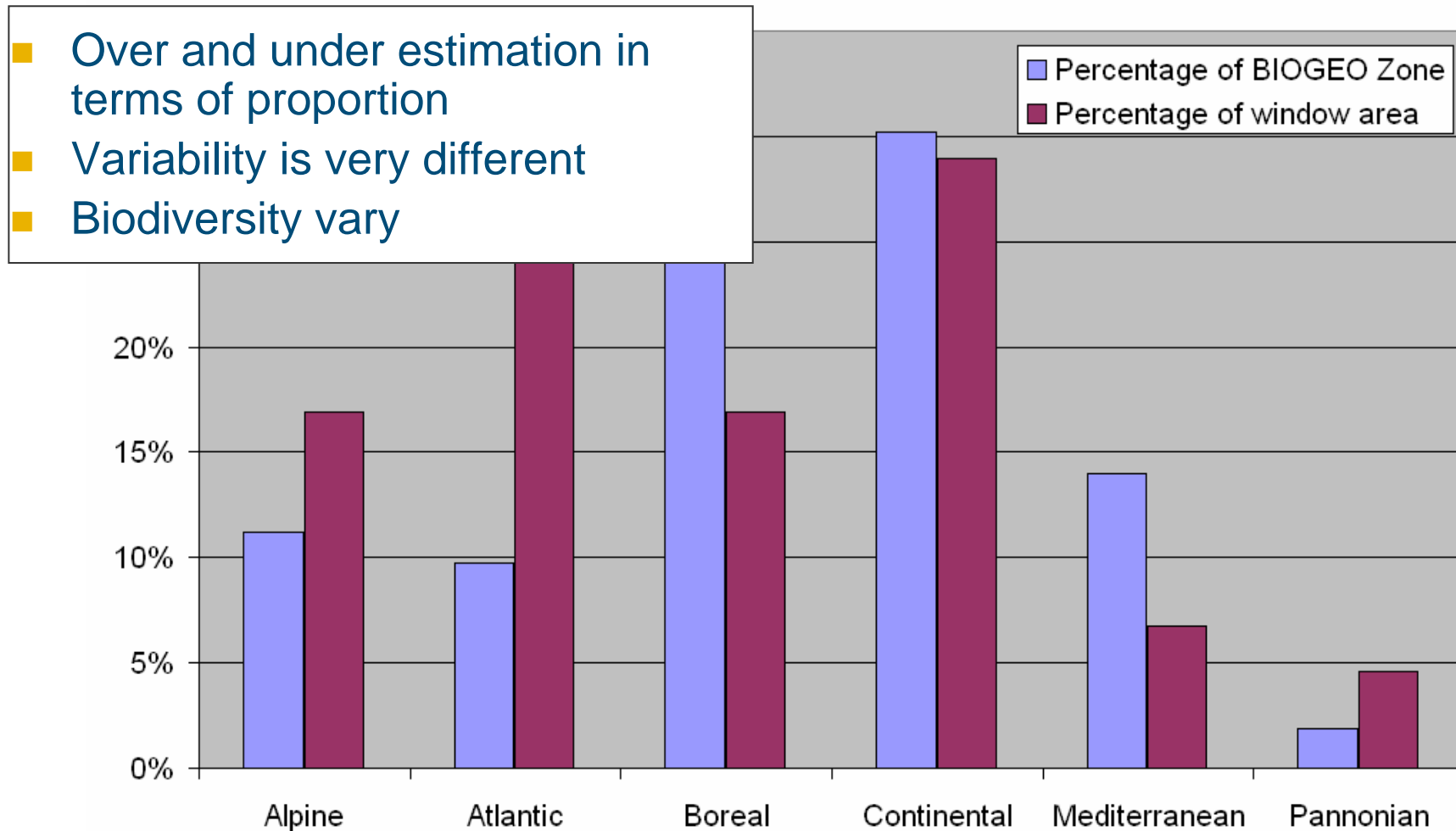
Landcover characteristics for all windows



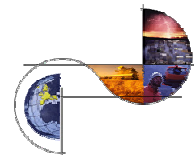
Universität Hamburg



# Sampling area of windows in respect to size of BMRE region

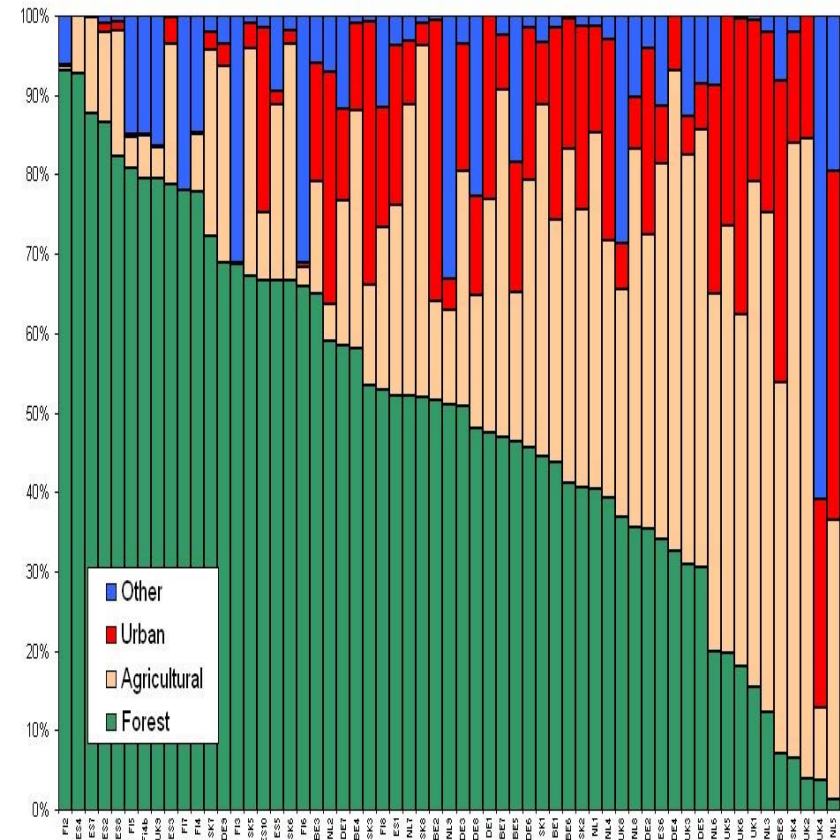
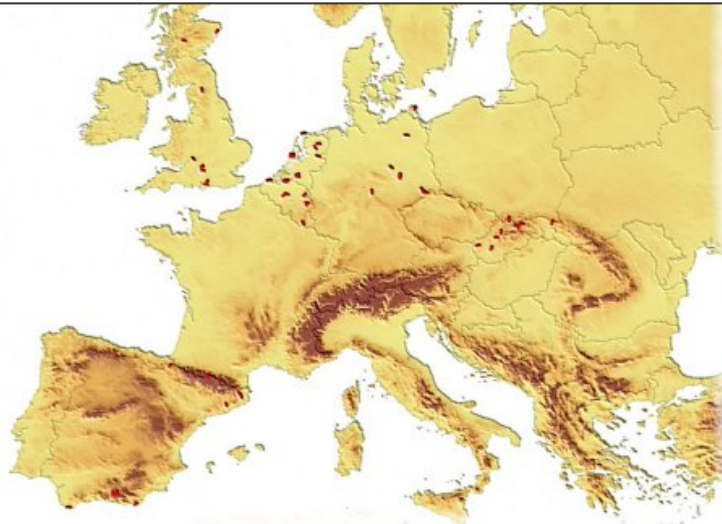


Universität Hamburg



# Distribution of 59 Transects

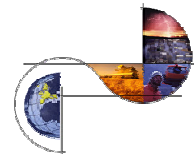
- Clustering: partner countries
- four umbrella habitats
- Artificial area, forest and semi natural grassland area increases



Landcover characteristics for all transects



Universität Hamburg

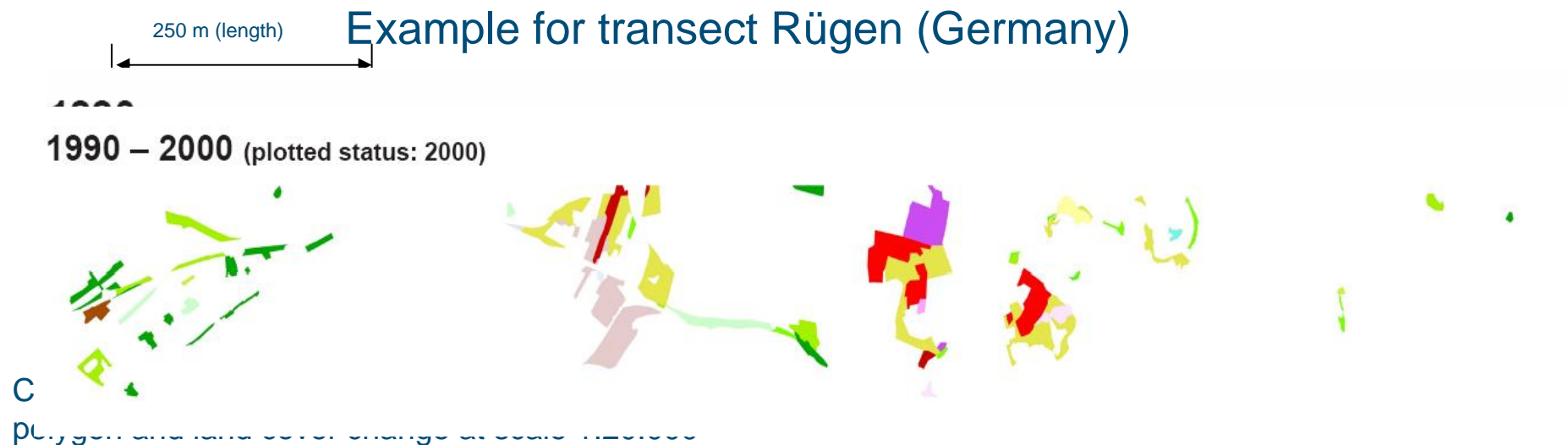




# Interpretation Methodology

---

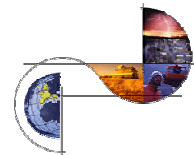
- **Windows:** backdating from CLC 1990 to 1950
- **Transects:** Photo to Photo manual Interpretation for 2000, 1990 and 1950



➔ Grouping of changes using Landcover to pressure conversion matrix



Universität Hamburg

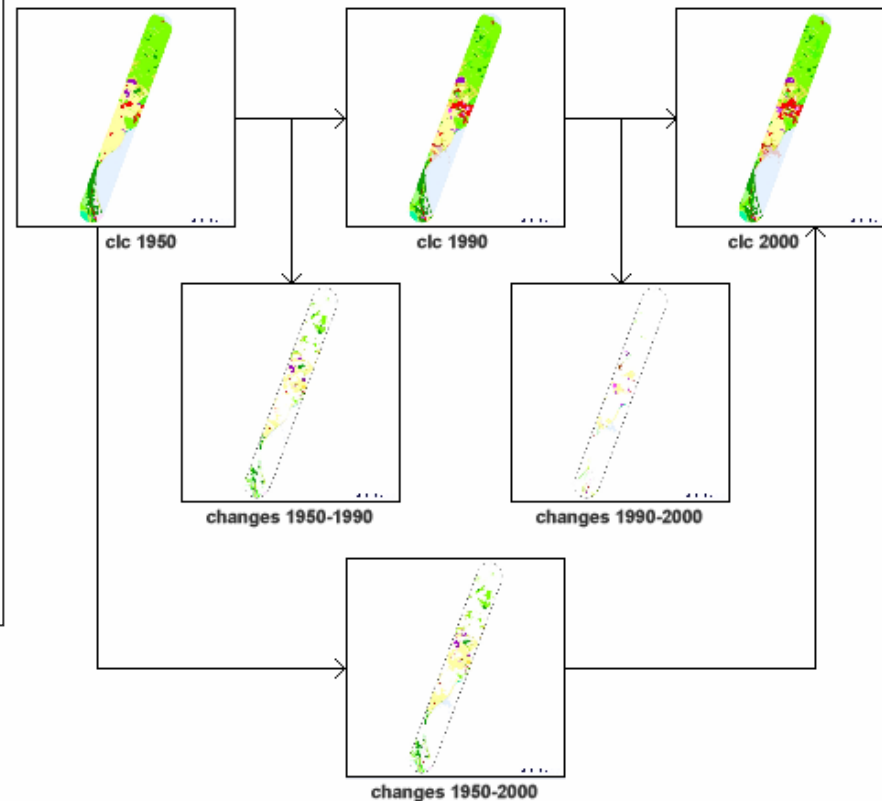


# Storage of results in Internet database

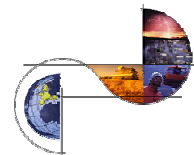
- Characteristics / GIS
- Meta database with explanations
- Real time statistics
- Natura 2000 site information
- Maps showing land cover and pressures

## Interpretation with description of status and changes:

For further information please click on picture



Universität Hamburg



# Examples from the Internet database for Rügen 1/2

Proportion of changed transect area between 1950 and 1990 for all levels

| <u>L1</u> | <u>L2</u> | <u>L3</u> |
|-----------|-----------|-----------|
| 9.5 %     | 16.16 %   | 21.15 %   |

Cross table of changed transect area between 1950 and 1990 level 1

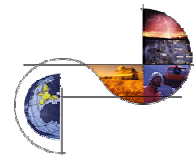
|                                   |   | CLC Level1 Window DE08 1990 |        |         |      |        |
|-----------------------------------|---|-----------------------------|--------|---------|------|--------|
| CLC Level1<br>Window<br>DE08 1950 |   | 1                           | 2      | 3       | 4    | 5      |
|                                   | 1 | 165,40                      | 10,85  | 33,50   |      |        |
|                                   | 2 | 159,26                      | 577,15 | 52,48   |      |        |
|                                   | 3 | 29,53                       | 3,69   | 1476,43 |      | 4,70   |
|                                   | 4 |                             |        |         | 0,00 |        |
|                                   | 5 | 9,65                        |        | 10,60   |      | 775,76 |
|                                   |   | Area in Hectare             |        |         |      |        |

Main changes observed in transect

| Direction                 | Area     | Percent |
|---------------------------|----------|---------|
| <a href="#">211 - 231</a> | 92.13 ha | 13.00 % |
| <a href="#">311 - 313</a> | 76.51 ha | 11.00 % |
| <a href="#">211 - 112</a> | 54.75 ha | 8.00 %  |
| <a href="#">311 - 312</a> | 33.42 ha | 5.00 %  |
| <a href="#">211 - 242</a> | 26.34 ha | 4.00 %  |



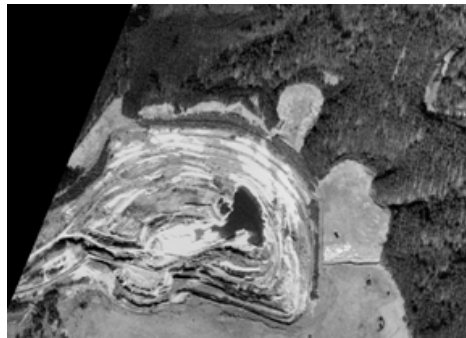
Universität Hamburg





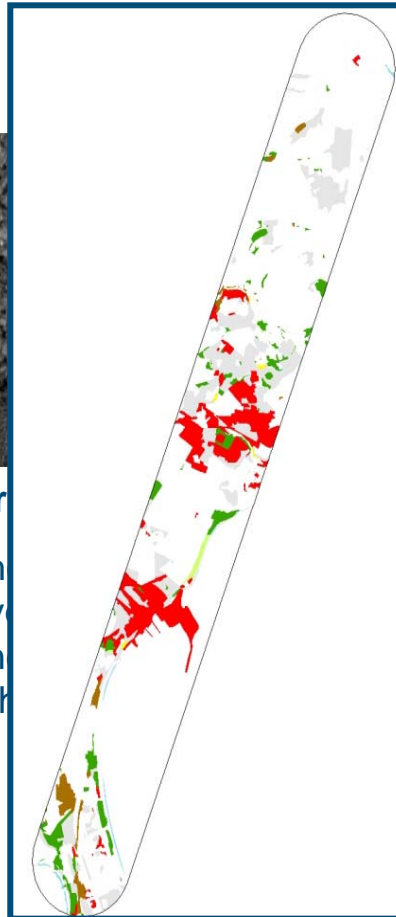
# Examples from the Internet database for Rügen 2/2

METADATA with local expert input  
Calculated pressure map for changes 1950 and 1990



## Explanation for changes from

These pictures of change show  
changing management. Dev  
from non-irrigated arable land  
and occurs in the centre of the  
changes within these areas.



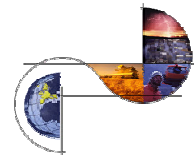
## Legend

- Urbanisation
- Intensification
- Abandonment
- Deforestation
- Afforestation
- Drainage
- No relevant change
- No changes
- No data

t of  
of land  
nges  
f all  
nsect.

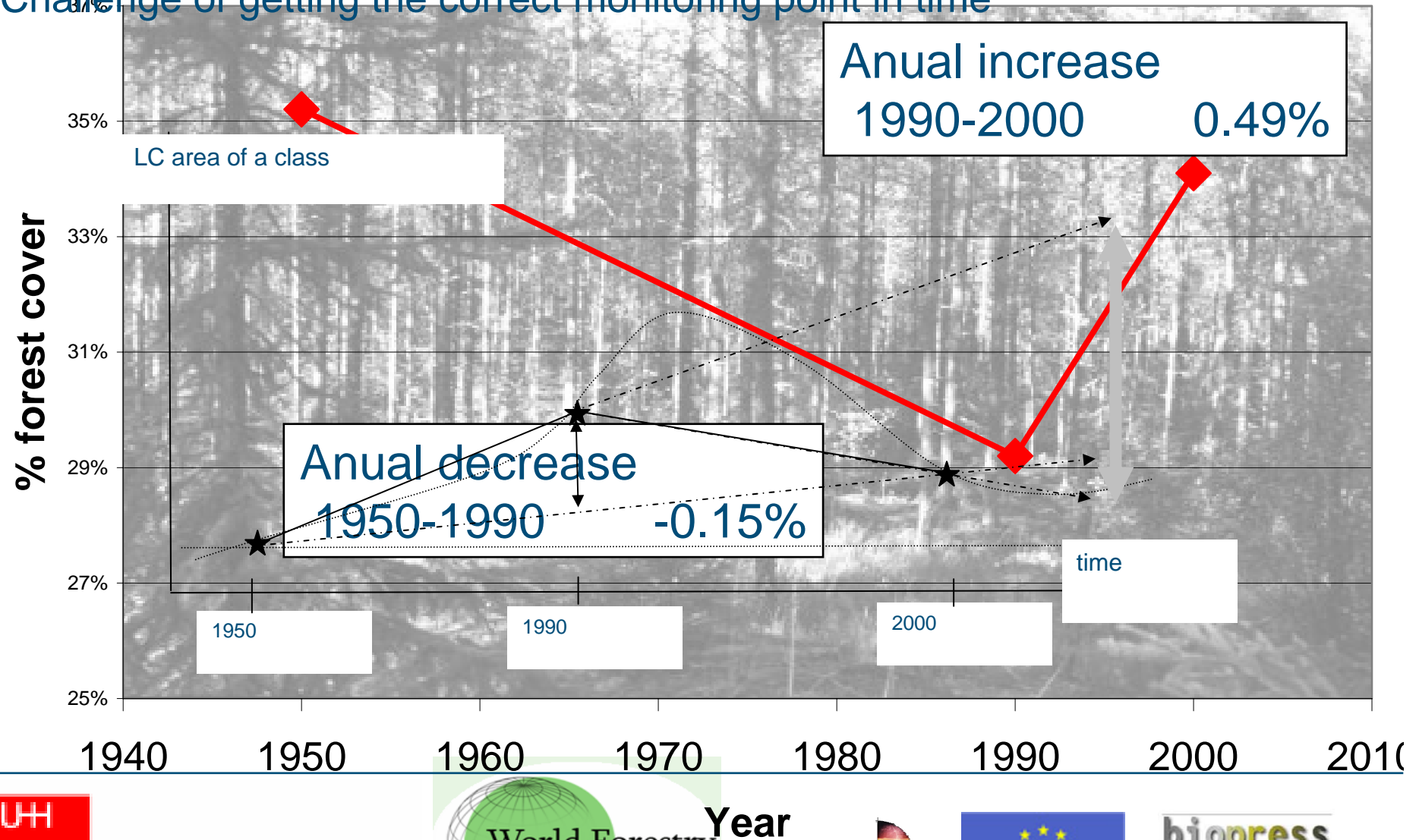


Universität Hamburg



# Annual rate of changes for forest (DE7)

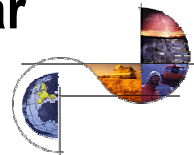
Challenge of getting the correct monitoring point in time



Universität Hamburg



Year



# Results of window interpretation

- Most changes affect interpretation level 2
- Five time more changes were assessed in windows than in transects
- Urbanisation took mostly place in the Atlantic and Continental region and mostly on agricultural area
- Area inside of Natura 2000 sites stayed mostly unchanged

|               | No Change | Agriculture to Urban | Agriculture to Forest/Grassland | Forest/Grassland to Agriculture | Forest/Grassland to Urban |
|---------------|-----------|----------------------|---------------------------------|---------------------------------|---------------------------|
| Alpine        | 96,68%    | 0,77%                | 0,98%                           | 0,76%                           | 0,11%                     |
| Atlantic      | 91,63%    | <b>5,30%</b>         | 0,52%                           | 0,68%                           | 0,58%                     |
| Boreal        | 96,89%    | 0,28%                | 0,83%                           | <b>1,12%</b>                    | 0,27%                     |
| Continental   | 94,92%    | <b>2,09%</b>         | 1,29%                           | 0,21%                           | 0,24%                     |
| Mediterranean | 96,57%    | 0,59%                | 1,92%                           | 0,30%                           | 0,10%                     |

# Derived pressures from transects

1950-2000

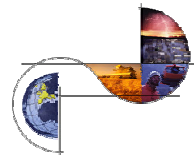
| BIOGEO region | Abandonment | Afforestation | Deforestation | Drainage | Intensification | NO Pressure | Urbanization |
|---------------|-------------|---------------|---------------|----------|-----------------|-------------|--------------|
| Alpine        | 1%          | 44%           | 10%           | 3%       | 5%              | 24%         | 13%          |
| Atlantic      | 2%          | 21%           | 5%            | 10%      | 17%             | 13%         | 33%          |
| Boreal        | 35%         | 16%           | 1%            | 43%      | 4%              |             | 1%           |
| Continental   | 0%          | 24%           | 18%           | 4%       | 13%             | 17%         | 23%          |
| Mediterranean | 0%          | 46%           | 5%            | 3%       | 16%             | 2%          | 28%          |

1950-1990

| BIOGEO region | Abandonment | Afforestation | Deforestation | Drainage | Intensification | NO Pressure | Urbanization |
|---------------|-------------|---------------|---------------|----------|-----------------|-------------|--------------|
| Alpine        | 1%          | 37%           | 7%            | 2%       | 6%              | 34%         | 13%          |
| Atlantic      | 2%          | 20%           | 5%            | 11%      | 19%             | 13%         | 31%          |
| Boreal        | 36%         | 18%           | 1%            | 41%      | 4%              |             | 1%           |
| Continental   | 1%          | 24%           | 20%           | 5%       | 15%             | 16%         | 21%          |
| Mediterranean | 0%          | 45%           | 10%           | 4%       | 15%             | 1%          | 24%          |



Universität Hamburg



# How does stratification work?

**Auxilliary variable for deforestation:** Area of forest clearcut in ha

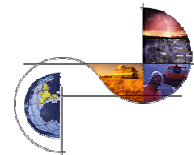


- Using ~~BMRE~~ for stratification reduced variability in land cover  
**STDV: 1704ha**
- Using umbrella habitats reduced variability in land cover  
**STDV: 160ha**
- Stratification of pressures to BMRE were less successful  
**STDV: 250ha**
- For each variable of interest or pressure a specific stratification rules is required  
**STDV: 455ha**

Stratification by proportion of forest  
Stratification by umbrella habitat

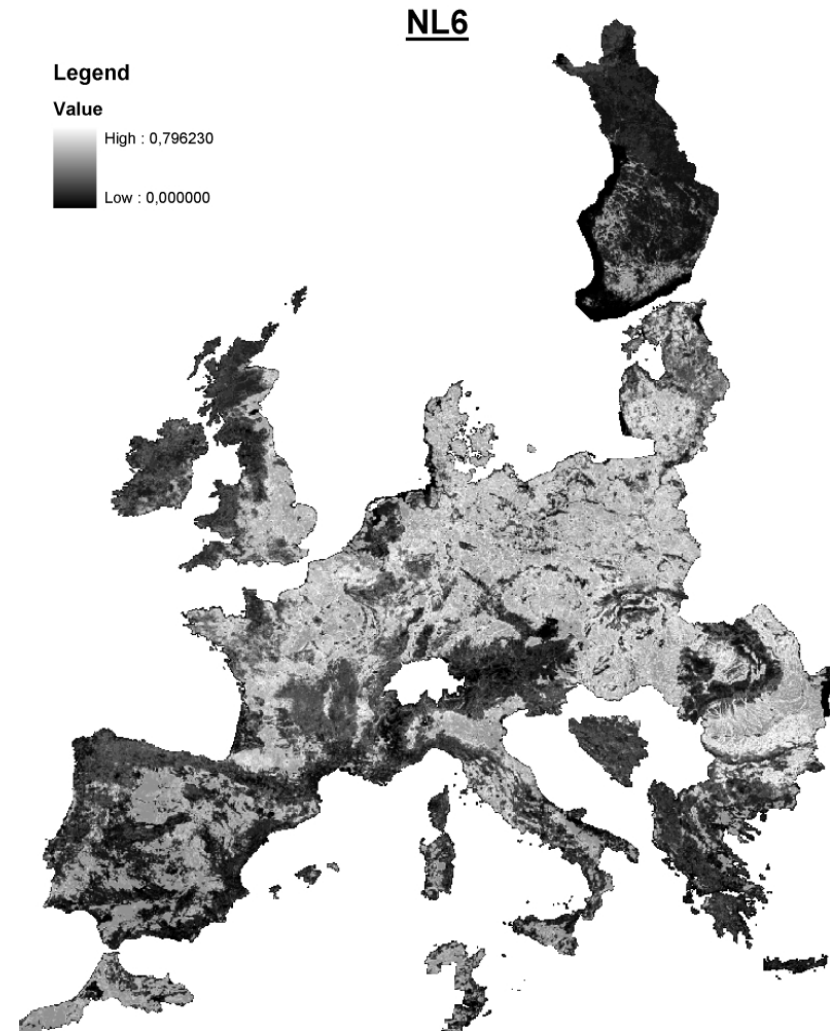
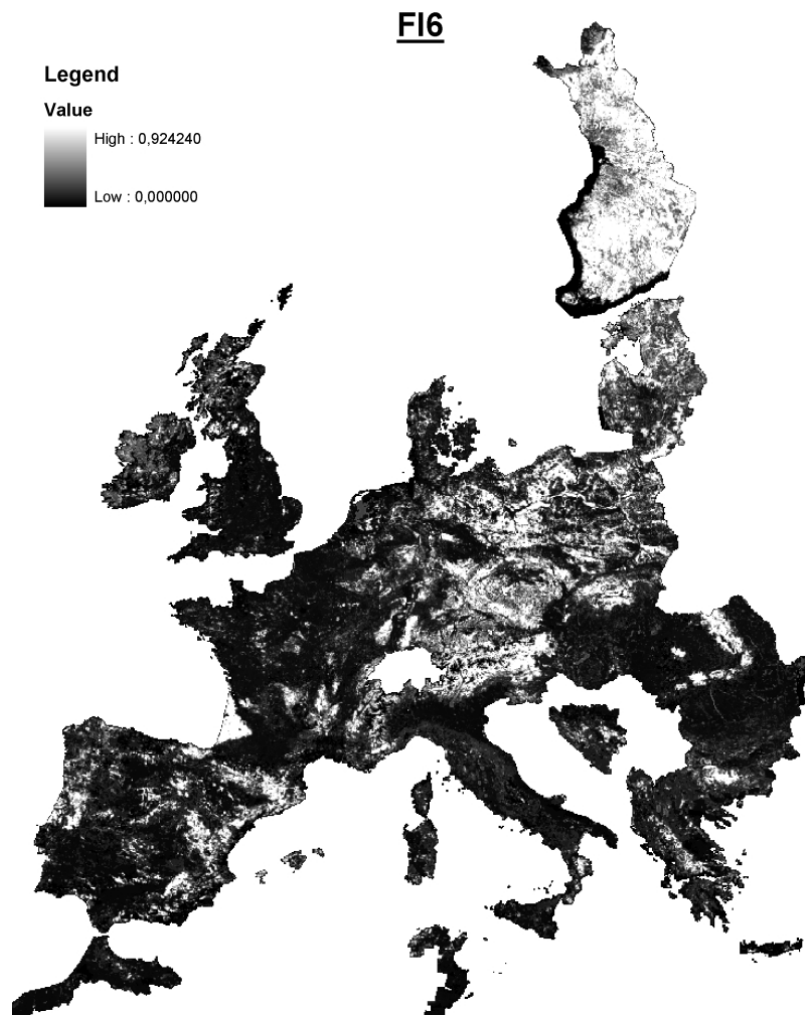


Universität Hamburg

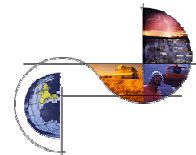




# Representativity analysis



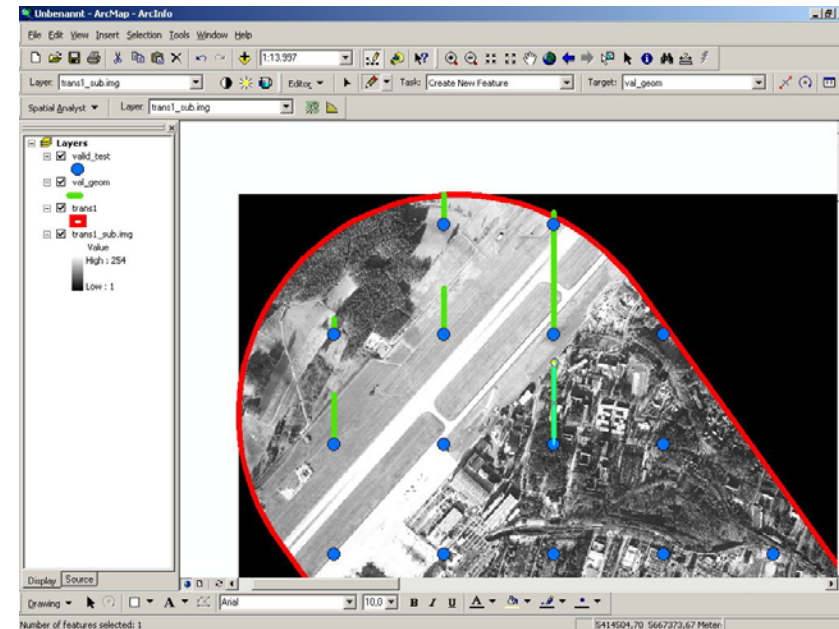
Universität Hamburg





# Quality assurance

- Missing of verification source for 1950 ies
- 18 transects: sample validation
- 6 transects: full cover reinterpretation
- Windows partly reinterpreted
- Feedback from local experts



**Consistency %** ■ good ( $\geq 90\%$ ) ■ Bad ( $< 50\%$ )

|             | LC 50 |     |     | LC 90 |     |     | LC 00 |     |     |
|-------------|-------|-----|-----|-------|-----|-----|-------|-----|-----|
|             | L1    | L2  | L3  | L1    | L2  | L3  | L1    | L2  | L3  |
| Continental | 89%   | 80% | 52% | 92%   | 82% | 57% | 90%   | 79% | 50% |
| Atlantic    | 89%   | 74% | 54% | 88%   | 76% | 55% | 89%   | 78% | 56% |
| Mediterran  | 92%   | 83% | 39% | 93%   | 87% | 37% | 93%   | 88% | 37% |
| Alpine      | 94%   | 75% | 50% | 95%   | 81% | 53% | 94%   | 82% | 55% |
| Boreal      | 94%   | 91% | 59% | 94%   | 87% | 57% | 95%   | 88% | 56% |